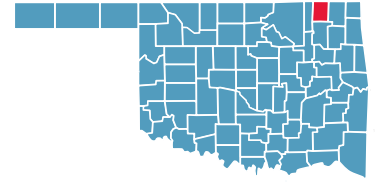


NOWATA COUNTY

County Seat: **Nowata**



Number of Children (2005): **2,513**

Number of Poor Children (2004): **505**

Children are **23.1%** of the county population

Child Poverty Rate: **20.3%**

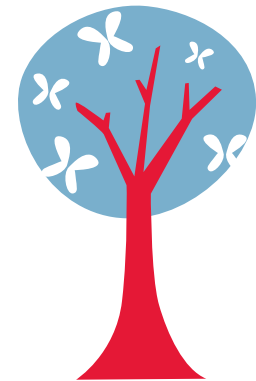
Economic Cluster: **#5, Poorest**

Indicator	Base Data	-	Worsened	Improved	+	Recent Data	Rank
BIRTHWEIGHT							
Low Birthweight (<5.5lbs)	8.4% of live births, 1994-96					39.4%	5.1% of live births, 2003-05 7
Very Low Birthweight (<3 lbs, 5oz)	1.6% of live births, 1994-96					34.1%	1.1% of live births, 2003-05 36
BIRTHS TO TEENS							
Births to Young Teens (ages 15-17)	37.6/1,000 girls 15-17, 1994-96					40.4%	22.4/1,000 girls 15-17, 2003-05 30
Births to Older Teens (ages 18-19)	153.0/1,000 girls 18-19, 1994-96					34.3%	100.5/1,000 girls 18-19, 2003-05 33
Births to Teens (ages 15-19)	78.6/1,000 girls 15-19, 1994-96					34.4%	51.6/1,000 girls 15-19, 2003-05 30
CHILD ABUSE & NEGLECT	12.0 confirmed/1,000 children, FY 1995-97	-35.7%					16.3 confirmed/1,000 children, FY 2004-06 33
HIGH SCHOOL DROPOUTS	0.7% youth <age 19, SY 2001/02-2003/04	-16.7%					0.9% youth <age 19, SY 2003/04-2005/06 6
VIOLENT CRIME ARRESTS	141.5/100,000 youths 10-17, 1994-96	-69.1%					239.2/100,000 youths 10-17, 2003-05 69
MORTALITY							
Infant Mortality (<age 1)	10.9/1,000 live births, 1994-96					50.5%	5.4/1,000 live births, 2003-05 17
Child Death (ages 1-14)	17.6/100,000 children 1-14, 1994-96	-186.7%					50.4/100,000 children 1-14, 2003-05 63
Teen Death (ages 15-19)	48.5/100,000 teens 15-19, 1994-96	-166.1%					129.2/100,000 teens 15-19, 2003-05 57
Child & Teen Death (ages 1-19)	25.8/100,000 youth 1-19, 1994-96	-180.9%					72.5/100,000 youth 1-19, 2003-05 66
ECONOMIC CLUSTER	202 Economic Index, 1994-96					5.4%	191 Economic Index, 2003-05 50

■ state change ■ county change ### = zero base - cannot calculate change County Rank (1 = best) (77 = worst)
 Changes of more than 100%—positive or negative—are graphed with broken bar *Indicates a tie with at least one other county.

CHILDHOOD STRESS INDEX

Category / Indicator	Number	Rate	Rank
BIRTH / GENETIC / BIOLOGICAL			
Very Low Birthweight (2003-05)	1 avg annual	1.1%	36
Autism Reported on IEPs (ages 3-21, FFY 2005-07)	9 avg annual	3.3/1,000	75
ENVIRONMENTAL FACTORS			
Poverty (ages 0-17, 2004)	505	20.3%	34
Unemployment (2003-05)	n/a	6.0%	58
EXPOSURE TO TRAUMA			
FEMA Disaster Declarations (Nov 2000-Aug 2007)	6	0.4/1,000 children	30
Adverse Childhood Experiences (ACE Index, 2006/07 Kids Count)	29.5	n/a	26
ACCESS TO TREATMENT			
Untreated by DMHSAS, OJA or Medicaid (ages 9-17, FY 2005-06)			
Untreated Mentally Ill & Substance-Abusers	161 avg annual	57.2%	32*
Untreated Serious Emotional Disturbance	57 avg annual	32.6%	
Suicide (ages 5-24, 2003-05)	0 avg annual	0.0/100,000	1*



Childhood Stress Rank

44

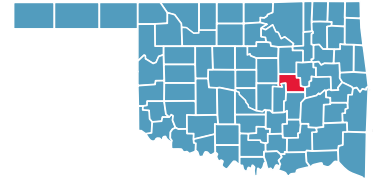
*Indicates a tie with at least one other county.

0.0%* or 0* indicates that, on average, services were provided to numbers of young clients which appear to serve all of the estimated need (prevalence) in the county



OKFUSKEE COUNTY

County Seat: **Okemah**



Number of Children (2005): **2,468**

Number of Poor Children (2004): **688**

Children are **21.6%** of the county population

Child Poverty Rate: **28.2%**

Economic Cluster: **#5, Poorest**

Indicator	Base Data	-	Worsened	Improved	+	Recent Data	Rank
BIRTHWEIGHT							
Low Birthweight (<5.5lbs)	10.0% of live births, 1994-96					8.5%	9.2% of live births, 2003-05 69
Very Low Birthweight (<3 lbs, 5oz)	2.0% of live births, 1994-96	-52.4%				3.0% of live births, 2003-05	76
BIRTHS TO TEENS							
Births to Young Teens (ages 15-17)	49.0/1,000 girls 15-17, 1994-96					33.7%	32.5/1,000 girls 15-17, 2003-05 53
Births to Older Teens (ages 18-19)	128.0/1,000 girls 18-19, 1994-96					27.6%	92.6/1,000 girls 18-19, 2003-05 27
Births to Teens (ages 15-19)	75.9/1,000 girls 15-19, 1994-96					26.2%	56.1/1,000 girls 15-19, 2003-05 38
CHILD ABUSE & NEGLECT	7.6 confirmed/1,000 children, FY 1995-97	-19.4%				9.1 confirmed/1,000 children, FY 2004-06	8
HIGH SCHOOL DROPOUTS	3.1% youth <age 19, SY 2001/02-2003/04					0.7%	3.1% youth <age 19, SY 2003/04-2005/06 47
VIOLENT CRIME ARRESTS	243.2/100,000 youths 10-17, 1994-96					100.0%	0.0/100,000 youths 10-17, 2003-05 1*
MORTALITY							
Infant Mortality (<age 1)	12.2/1,000 live births, 1994-96					62.5%	4.6/1,000 live births, 2003-05 15
Child Death (ages 1-14)	14.9/100,000 children 1-14, 1994-96	-14.3%				17.1/100,000 children 1-14, 2003-05	16
Teen Death (ages 15-19)	75.6/100,000 teens 15-19, 1994-96	-123.3%				168.9/100,000 teens 15-19, 2003-05	67
Child & Teen Death (ages 1-19)	32.1/100,000 youth 1-19, 1994-96	-89.2%				60.8/100,000 youth 1-19, 2003-05	53
ECONOMIC CLUSTER	264 Economic Index, 1994-96	-10.6%				292 Economic Index, 2003-05	77

■ state change

■ county change

= zero base - cannot calculate change

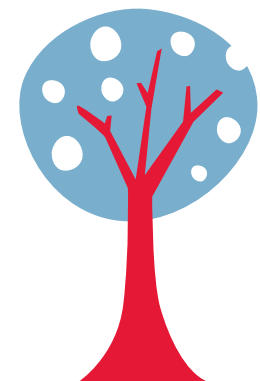
County Rank (1 = best) (77 = worst)

Changes of more than 100%—positive or negative—are graphed with broken bar

*Indicates a tie with at least one other county.

CHILDHOOD STRESS INDEX

Category / Indicator	Number	Rate	Rank
BIRTH / GENETIC / BIOLOGICAL			
Very Low Birthweight (2003-05)	4 avg annual	3.0%	76
Autism Reported on IEPs (ages 3-21, FFY 2005-07)	7 avg annual	2.5/1,000	70
ENVIRONMENTAL FACTORS			
Poverty (ages 0-17, 2004)	688	28.2%	71
Unemployment (2003-05)	n/a	8.8%	75
EXPOSURE TO TRAUMA			
FEMA Disaster Declarations (Nov 2000-Aug 2007)	11	0.2/1,000 children	15
Adverse Childhood Experiences (ACE Index, 2006/07 Kids Count)	25.1	n/a	16
ACCESS TO TREATMENT			
Untreated by DMHSAS, OJA or Medicaid (ages 9-17, FY 2005-06)			
Untreated Mentally Ill & Substance-Abusers	165 avg annual	61.3%	42*
Untreated Serious Emotional Disturbance	65 avg annual	38.7%	
Suicide (ages 5-24, 2003-05)	0 avg annual	0.0/100,000	1*



Childhood Stress Rank

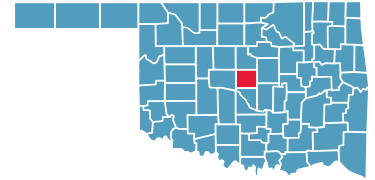
72

*Indicates a tie with at least one other county.

0.0%* or 0* indicates that, on average, services were provided to numbers of young clients which appear to serve all of the estimated need (prevalence) in the county

OKLAHOMA COUNTY

County Seat: **Oklahoma City**



Number of Children (2005): **171,633**

Number of Poor Children (2004): **37,388**

Children are **25.1%** of the county population

Child Poverty Rate: **21.9%**

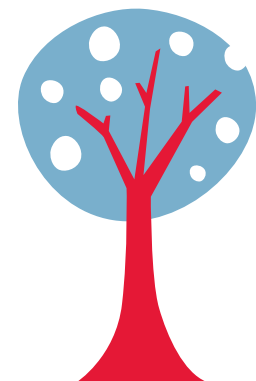
Economic Cluster: **#4, Poorer**

Indicator	Base Data	-	Worsened	Improved	+	Recent Data	Rank
BIRTHWEIGHT							
Low Birthweight (<5.5lbs)	8.1% of live births, 1994-96	-6.1%				8.6% of live births, 2003-05	58
Very Low Birthweight (<3 lbs, 5oz)	1.4% of live births, 1994-96	-12.2%				1.5% of live births, 2003-05	61
BIRTHS TO TEENS							
Births to Young Teens (ages 15-17)	44.5/1,000 girls 15-17, 1994-96				13.4%	38.5/1,000 girls 15-17, 2003-05	67
Births to Older Teens (ages 18-19)	109.8/1,000 girls 18-19, 1994-96				1.8%	107.8/1,000 girls 18-19, 2003-05	45
Births to Teens (ages 15-19)	70.7/1,000 girls 15-19, 1994-96				5.4%	66.9/1,000 girls 15-19, 2003-05	57
CHILD ABUSE & NEGLECT	15.5 confirmed/1,000 children, FY 1995-97	-16.4%				18.1 confirmed/1,000 children, FY 2004-06	44
HIGH SCHOOL DROPOUTS	4.8% youth <age 19, SY 2001/02-2003/04				22.8%	3.7% youth <age 19, SY 2003/04-2005/06	64
VIOLENT CRIME ARRESTS	672.7/100,000 youths 10-17, 1994-96				69.0%	208.5/100,000 youths 10-17, 2003-05	65
MORTALITY							
Infant Mortality (<age 1)	9.3/1,000 live births, 1994-96	-3.9%				9.7/1,000 live births, 2003-05	61
Child Death (ages 1-14)	38.5/100,000 children 1-14, 1994-96				33.4%	25.7/100,000 children 1-14, 2003-05	31
Teen Death (ages 15-19)	97.9/100,000 teens 15-19, 1994-96				28.4%	70.1/100,000 teens 15-19, 2003-05	27
Child & Teen Death (ages 1-19)	53.8/100,000 youth 1-19, 1994-96				31.4%	36.9/100,000 youth 1-19, 2003-05	18
ECONOMIC CLUSTER	136 Economic Index, 1994-96	-19.1%				162 Economic Index, 2003-05	44*

■ state change ■ county change ### = zero base - cannot calculate change County Rank (1 = best) (77 = worst)
 Changes of more than 100%—positive or negative—are graphed with broken bar *Indicates a tie with at least one other county.

CHILDHOOD STRESS INDEX

Category / Indicator	Number	Rate	Rank
BIRTH / GENETIC / BIOLOGICAL			
Very Low Birthweight (2003-05)	179 avg annual	1.5%	61
Autism Reported on IEPs (ages 3-21, FFY 2005-07)	264 avg annual	1.5/1,000	42
ENVIRONMENTAL FACTORS			
Poverty (ages 0-17, 2004)	37,388	21.9%	43*
Unemployment (2003-05)	n/a	4.9%	43
EXPOSURE TO TRAUMA			
FEMA Disaster Declarations (Nov 2000-Aug 2007)	10	17.2/1,000 children	76
Adverse Childhood Experiences (ACE Index, 2006/07 Kids Count)	42.1	n/a	57
ACCESS TO TREATMENT			
Untreated by DMHSAS, OJA or Medicaid (ages 9-17, FY 2005-06)			
Untreated Mentally Ill & Substance-Abusers	10,025 avg annual	60.3%	42*
Untreated Serious Emotional Disturbance	4,282 avg annual	41.4%	
Suicide (ages 5-24, 2003-05)	19 avg annual	10.4/100,000	59



Childhood Stress Rank

57

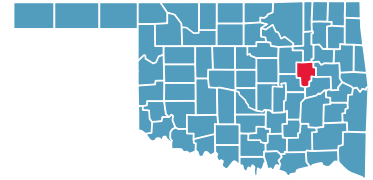
*Indicates a tie with at least one other county.

0.0%* or 0* indicates that, on average, services were provided to numbers of young clients which appear to serve all of the estimated need (prevalence) in the county



OKMULGEE COUNTY

County Seat: Okmulgee



Number of Children (2005): 9,705

Number of Poor Children (2004): 2,520

Children are 24.4% of the county population

Child Poverty Rate: 26.1%

Economic Cluster: #5, Poorest

Indicator	Base Data	-	Worsened	Improved	+	Recent Data	Rank
BIRTHWEIGHT							
Low Birthweight (<5.5lbs)	7.4% of live births, 1994-96	-0.5%				7.5% of live births, 2003-05	35
Very Low Birthweight (<3 lbs, 5oz)	1.4% of live births, 1994-96	-6.8%				1.5% of live births, 2003-05	59
BIRTHS TO TEENS							
Births to Young Teens (ages 15-17)	49.2/1,000 girls 15-17, 1994-96				47.8%	25.7/1,000 girls 15-17, 2003-05	36
Births to Older Teens (ages 18-19)	130.0/1,000 girls 18-19, 1994-96				9.2%	118.0/1,000 girls 18-19, 2003-05	56
Births to Teens (ages 15-19)	78.9/1,000 girls 15-19, 1994-96				22.9%	60.9/1,000 girls 15-19, 2003-05	43
CHILD ABUSE & NEGLECT	9.2 confirmed/1,000 children, FY 1995-97	-12.3%				10.3 confirmed/1,000 children, FY 2004-06	13
HIGH SCHOOL DROPOUTS	2.6% youth <age 19, SY 2001/02-2003/04				26.5%	1.9% youth <age 19, SY 2003/04-2005/06	26
VIOLENT CRIME ARRESTS	323.4/100,000 youths 10-17, 1994-96				60.8%	126.7/100,000 youths 10-17, 2003-05	41
MORTALITY							
Infant Mortality (<age 1)	8.9/1,000 live births, 1994-96				4.1%	8.5/1,000 live births, 2003-05	52
Child Death (ages 1-14)	29.7/100,000 children 1-14, 1994-96				26.4%	21.9/100,000 children 1-14, 2003-05	24
Teen Death (ages 15-19)	77.9/100,000 teens 15-19, 1994-96				16.8%	64.8/100,000 teens 15-19, 2003-05	24
Child & Teen Death (ages 1-19)	43.0/100,000 youth 1-19, 1994-96				20.4%	34.2/100,000 youth 1-19, 2003-05	13
ECONOMIC CLUSTER	255 Economic Index, 1994-96				7.8%	235 Economic Index, 2003-05	65

■ state change

■ county change

= zero base - cannot calculate change

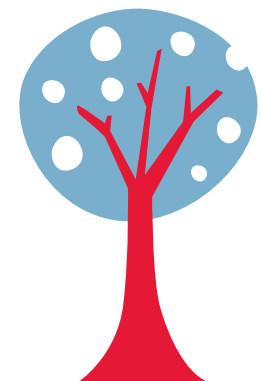
County Rank (1 = best) (77 = worst)

Changes of more than 100%—positive or negative—are graphed with broken bar

*Indicates a tie with at least one other county.

CHILDHOOD STRESS INDEX

Category / Indicator	Number	Rate	Rank
BIRTH / GENETIC / BIOLOGICAL			
Very Low Birthweight (2003-05)	8 avg annual	1.5%	59
Autism Reported on IEPs (ages 3-21, FFY 2005-07)	24 avg annual	2.2/1,000	68
ENVIRONMENTAL FACTORS			
Poverty (ages 0-17, 2004)	2,520	26.1%	63*
Unemployment (2003-05)	n/a	7.7%	71
EXPOSURE TO TRAUMA			
FEMA Disaster Declarations (Nov 2000-Aug 2007)	10	1.0/1,000 children	51
Adverse Childhood Experiences (ACE Index, 2006/07 Kids Count)	30.7	n/a	29
ACCESS TO TREATMENT			
Untreated by DMHSAS, OJA or Medicaid (ages 9-17, FY 2005-06)			
Untreated Mentally Ill & Substance-Abusers	571 avg annual	54.0%	26*
Untreated Serious Emotional Disturbance	187 avg annual	28.5%	
Suicide (ages 5-24, 2003-05)	1 avg annual	5.9/100,000	40



Childhood Stress Rank

73

*Indicates a tie with at least one other county.

0.0%* or 0* indicates that, on average, services were provided to numbers of young clients which appear to serve all of the estimated need (prevalence) in the county

OSAGE COUNTY

County Seat: Pawhuska



Number of Children (2005): 10,103

Number of Poor Children (2004): 1,882

Children are 22.2% of the county population

Child Poverty Rate: 18.8%

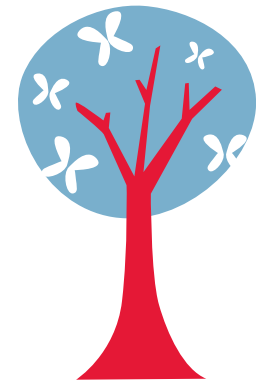
Economic Cluster: #3, Middle

Indicator	Base Data	-	Worsened	Improved	+	Recent Data	Rank
BIRTHWEIGHT							
Low Birthweight (<5.5lbs)	7.5% of live births, 1994-96					6.5%	7.0% of live births, 2003-05 27
Very Low Birthweight (<3 lbs, 5oz)	1.0% of live births, 1994-96	-13.1%				1.1% of live births, 2003-05	43
BIRTHS TO TEENS							
Births to Young Teens (ages 15-17)	26.8/1,000 girls 15-17, 1994-96					36.7%	16.9/1,000 girls 15-17, 2003-05 16
Births to Older Teens (ages 18-19)	88.8/1,000 girls 18-19, 1994-96					13.9%	76.5/1,000 girls 18-19, 2003-05 19
Births to Teens (ages 15-19)	45.9/1,000 girls 15-19, 1994-96					16.1%	38.5/1,000 girls 15-19, 2003-05 16
CHILD ABUSE & NEGLECT	11.4 confirmed/1,000 children, FY 1995-97	-4.3%				11.9 confirmed/1,000 children, FY 2004-06	20
HIGH SCHOOL DROPOUTS	3.0% youth <age 19, SY 2001/02-2003/04					23.3%	2.3% youth <age 19, SY 2003/04-2005/06 32
VIOLENT CRIME ARRESTS	103.6/100,000 youths 10-17, 1994-96					40.1%	62.1/100,000 youths 10-17, 2003-05 16
MORTALITY							
Infant Mortality (<age 1)	6.8/1,000 live births, 1994-96	-80.9%				12.2/1,000 live births, 2003-05	70
Child Death (ages 1-14)	14.6/100,000 children 1-14, 1994-96	-100.6%				29.4/100,000 children 1-14, 2003-05	40
Teen Death (ages 15-19)	138.5/100,000 teens 15-19, 1994-96					57.7%	58.6/100,000 teens 15-19, 2003-05 18
Child & Teen Death (ages 1-19)	46.3/100,000 youth 1-19, 1994-96					17.6%	38.2/100,000 youth 1-19, 2003-05 23
ECONOMIC CLUSTER	121 Economic Index, 1994-96	-3.3%				125 Economic Index, 2003-05	29

■ state change ■ county change ### = zero base - cannot calculate change County Rank (1 = best) (77 = worst)
 Changes of more than 100%—positive or negative—are graphed with broken bar *Indicates a tie with at least one other county.

CHILDHOOD STRESS INDEX

Category / Indicator	Number	Rate	Rank
BIRTH / GENETIC / BIOLOGICAL			
Very Low Birthweight (2003-05)	5 avg annual	1.1%	43
Autism Reported on IEPs (ages 3-21, FFY 2005-07)	12 avg annual	1.0/1,000	16
ENVIRONMENTAL FACTORS			
Poverty (ages 0-17, 2004)	1,882	18.8%	25*
Unemployment (2003-05)	n/a	5.5%	52*
EXPOSURE TO TRAUMA			
FEMA Disaster Declarations (Nov 2000-Aug 2007)	8	1.3/1,000 children	56
Adverse Childhood Experiences (ACE Index, 2006/07 Kids Count)	20.4	n/a	10
ACCESS TO TREATMENT			
Untreated by DMHSAS, OJA or Medicaid (ages 9-17, FY 2005-06)			
Untreated Mentally Ill & Substance-Abusers	766 avg annual	63.9%	54
Untreated Serious Emotional Disturbance	353 avg annual	47.4%	
Suicide (ages 5-24, 2003-05)	1 avg annual	8.1/100,000	49



Childhood Stress Rank

42

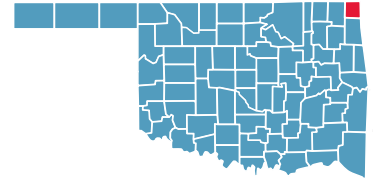
*Indicates a tie with at least one other county.

0.0%* or 0* indicates that, on average, services were provided to numbers of young clients which appear to serve all of the estimated need (prevalence) in the county



OTTAWA COUNTY

County Seat: Miami



Number of Children (2005): 7,782

Number of Poor Children (2004): 1,869

Children are 23.7% of the county population

Child Poverty Rate: 24.5%

Economic Cluster: #5, Poorest

Indicator	Base Data	-	Worsened	Improved	+	Recent Data	Rank
BIRTHWEIGHT							
Low Birthweight (<5.5lbs)	5.8% of live births, 1994-96	-48.4%				8.6% of live births, 2003-05	61
Very Low Birthweight (<3 lbs, 5oz)	1.0% of live births, 1994-96	-62.0%				1.7% of live births, 2003-05	69
BIRTHS TO TEENS							
Births to Young Teens (ages 15-17)	50.0/1,000 girls 15-17, 1994-96				27.7%	36.1/1,000 girls 15-17, 2003-05	61
Births to Older Teens (ages 18-19)	104.0/1,000 girls 18-19, 1994-96				3.0%	100.9/1,000 girls 18-19, 2003-05	35
Births to Teens (ages 15-19)	74.4/1,000 girls 15-19, 1994-96				14.3%	63.8/1,000 girls 15-19, 2003-05	51
CHILD ABUSE & NEGLECT							
	10.2 confirmed/1,000 children, FY 1995-97	-22.7%				12.5 confirmed/1,000 children, FY 2004-06	22
HIGH SCHOOL DROPOUTS							
	4.6% youth <age 19, SY 2001/02-2003/04				26.5%	3.4% youth <age 19, SY 2003/04-2005/06	53
VIOLENT CRIME ARRESTS							
	107.3/100,000 youths 10-17, 1994-96	-54.2%				165.5/100,000 youths 10-17, 2003-05	57
MORTALITY							
Infant Mortality (<age 1)	7.7/1,000 live births, 1994-96	-2.8%				7.9/1,000 live births, 2003-05	44
Child Death (ages 1-14)	41.0/100,000 children 1-14, 1994-96	-20.2%				49.3/100,000 children 1-14, 2003-05	62
Teen Death (ages 15-19)	67.2/100,000 teens 15-19, 1994-96	-51.5%				101.9/100,000 teens 15-19, 2003-05	48
Child & Teen Death (ages 1-19)	48.9/100,000 youth 1-19, 1994-96	-33.0%				65.1/100,000 youth 1-19, 2003-05	60
ECONOMIC CLUSTER							
	200 Economic Index, 1994-96				7.5%	185 Economic Index, 2003-05	48

■ state change

■ county change

= zero base - cannot calculate change

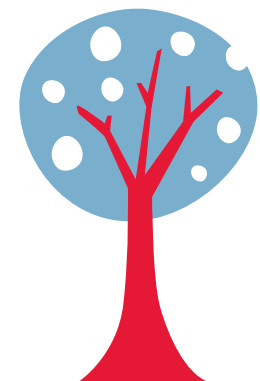
County Rank (1 = best) (77 = worst)

Changes of more than 100%—positive or negative—are graphed with broken bar

*Indicates a tie with at least one other county.

CHILDHOOD STRESS INDEX

Category / Indicator	Number	Rate	Rank
BIRTH / GENETIC / BIOLOGICAL			
Very Low Birthweight (2003-05)	7 avg annual	1.7%	69
Autism Reported on IEPs (ages 3-21, FFY 2005-07)	15 avg annual	1.7/1,000	48
ENVIRONMENTAL FACTORS			
Poverty (ages 0-17, 2004)	1,869	24.5%	53
Unemployment (2003-05)	n/a	6.5%	65
EXPOSURE TO TRAUMA			
FEMA Disaster Declarations (Nov 2000-Aug 2007)	6	1.3/1,000 children	58
Adverse Childhood Experiences (ACE Index, 2006/07 Kids Count)	30.6	n/a	28
ACCESS TO TREATMENT			
Untreated by DMHSAS, OJA or Medicaid (ages 9-17, FY 2005-06)			
Untreated Mentally Ill & Substance-Abusers	410 avg annual	47.4%	17
Untreated Serious Emotional Disturbance	91 avg annual	17.0%	
Suicide (ages 5-24, 2003-05)	1 avg annual	10.8/100,000	61



Childhood Stress Rank

66

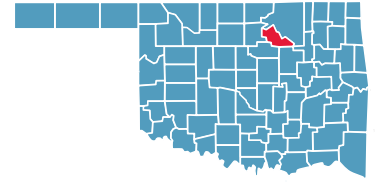
*Indicates a tie with at least one other county.

0.0%* or 0* indicates that, on average, services were provided to numbers of young clients which appear to serve all of the estimated need (prevalence) in the county



PAWNEE COUNTY

County Seat: Pawnee



Number of Children (2005): 3,971

Number of Poor Children (2004): 810

Children are 23.6% of the county population

Child Poverty Rate: 20.4%

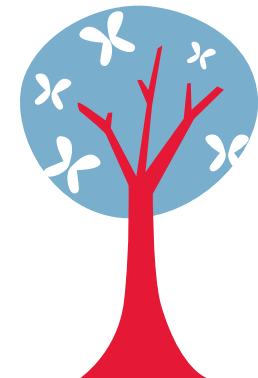
Economic Cluster: #3, Middle

Indicator	Base Data	-	Worsened	Improved	+	Recent Data	Rank
BIRTHWEIGHT							
Low Birthweight (<5.5lbs)	6.0% of live births, 1994-96	-56.8%				9.4% of live births, 2003-05	72
Very Low Birthweight (<3 lbs, 5oz)	1.0% of live births, 1994-96	-24.0%				1.3% of live births, 2003-05	52
BIRTHS TO TEENS							
Births to Young Teens (ages 15-17)	31.8/1,000 girls 15-17, 1994-96				13.5%	27.5/1,000 girls 15-17, 2003-05	39
Births to Older Teens (ages 18-19)	124.0/1,000 girls 18-19, 1994-96				24.4%	93.7/1,000 girls 18-19, 2003-05	29
Births to Teens (ages 15-19)	59.4/1,000 girls 15-19, 1994-96				11.3%	52.7/1,000 girls 15-19, 2003-05	32
CHILD ABUSE & NEGLECT							
	14.7 confirmed/1,000 children, FY 1995-97				24.9%	11.0 confirmed/1,000 children, FY 2004-06	16
HIGH SCHOOL DROPOUTS							
	3.8% youth <age 19, SY 2001/02-2003/04				62.3%	1.4% youth <age 19, SY 2003/04-2005/06	17
VIOLENT CRIME ARRESTS							
	50.2/100,000 youths 10-17, 1994-96	-95.8%				98.3/100,000 youths 10-17, 2003-05	33
MORTALITY							
Infant Mortality (<age 1)	6.8/1,000 live births, 1994-96				53.5%	3.2/1,000 live births, 2003-05	7
Child Death (ages 1-14)	40.5/100,000 children 1-14, 1994-96	-34.1				54.3/100,000 children 1-14, 2003-05	68
Teen Death (ages 15-19)	169.3/100,000 teens 15-19, 1994-96				53.2%	79.2/100,000 teens 15-19, 2003-05	33
Child & Teen Death (ages 1-19)	74.5/100,000 youth 1-19, 1994-96				17.4%	61.6/100,000 youth 1-19, 2003-05	55
ECONOMIC CLUSTER							
	140 Economic Index, 1994-96	-12.1%				157 Economic Index, 2003-05	42

■ state change ■ county change ### = zero base - cannot calculate change County Rank (1 = best) (77 = worst)
 Changes of more than 100%—positive or negative—are graphed with broken bar *Indicates a tie with at least one other county.

CHILDHOOD STRESS INDEX

Category / Indicator	Number	Rate	Rank
BIRTH / GENETIC / BIOLOGICAL			
Very Low Birthweight (2003-05)	3 avg annual	1.3%	52
Autism Reported on IEPs (ages 3-21, FFY 2005-07)	6 avg annual	1.3/1,000	32
ENVIRONMENTAL FACTORS			
Poverty (ages 0-17, 2004)	810	20.4%	35
Unemployment (2003-05)	n/a	6.2%	61
EXPOSURE TO TRAUMA			
FEMA Disaster Declarations (Nov 2000-Aug 2007)	7	0.6/1,000 children	37
Adverse Childhood Experiences (ACE Index, 2006/07 Kids Count)	21.4	n/a	11
ACCESS TO TREATMENT			
Untreated by DMHSAS, OJA or Medicaid (ages 9-17, FY 2005-06)			
Untreated Mentally Ill & Substance-Abusers	246 avg annual	54.1%	26*
Untreated Serious Emotional Disturbance	77 avg annual	27.3%	
Suicide (ages 5-24, 2003-05)	0 avg annual	7.5/100,000	48



Childhood Stress Rank

35

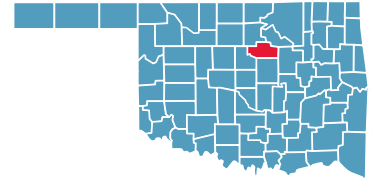
*Indicates a tie with at least one other county.

0.0%* or 0* indicates that, on average, services were provided to numbers of young clients which appear to serve all of the estimated need (prevalence) in the county



PAYNE COUNTY

County Seat: **Stillwater**



Number of Children (2005): **11,862**

Number of Poor Children (2004): **2,211**

Children are **17.2%** of the county population

Child Poverty Rate: **18.7%**

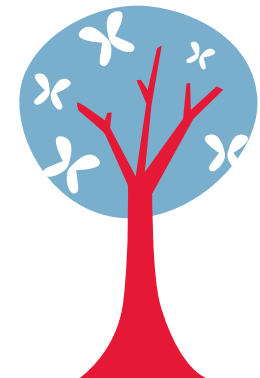
Economic Cluster: **#1, Wealthiest**

Indicator	Base Data	-	Worsened	Improved	+	Recent Data	Rank	
BIRTHWEIGHT								
Low Birthweight (<5.5lbs)	4.9% of live births, 1994-96	-18.9%				5.8% of live births, 2003-05	9	
Very Low Birthweight (<3 lbs, 5oz)	0.8% of live births, 1994-96	-19.5%				1.0% of live births, 2003-05	23	
BIRTHS TO TEENS								
Births to Young Teens (ages 15-17)	27.3/1,000 girls 15-17, 1994-96					10.2%	24.5/1,000 girls 15-17, 2003-05	33
Births to Older Teens (ages 18-19)	26.8/1,000 girls 18-19, 1994-96					1.9%	26.3/1,000 girls 18-19, 2003-05	1
Births to Teens (ages 15-19)	26.9/1,000 girls 15-19, 1994-96					4.3%	25.8/1,000 girls 15-19, 2003-05	3
CHILD ABUSE & NEGLECT								
	20.7 confirmed/1,000 children, FY 1995-97					21.2%	16.3 confirmed/1,000 children, FY 2004-06	34
HIGH SCHOOL DROPOUTS								
	3.6% youth <age 19, SY 2001/02-2003/04	-0.6%				3.6% youth <age 19, SY 2003/04-2005/06	61	
VIOLENT CRIME ARRESTS								
	212.6/100,000 youths 10-17, 1994-96					49.4%	107.6/100,000 youths 10-17, 2003-05	36
MORTALITY								
Infant Mortality (<age 1)	8.5/1,000 live births, 1994-96					18.5%	6.9/1,000 live births, 2003-05	35
Child Death (ages 1-14)	12.3/100,000 children 1-14, 1994-96	-182.0%				34.7/100,000 children 1-14, 2003-05	50	
Teen Death (ages 15-19)	34.1/100,000 teens 15-19, 1994-96	-65.7%				56.5/100,000 teens 15-19, 2003-05	16	
Child & Teen Death (ages 1-19)	20.7/100,000 youth 1-19, 1994-96	-109.7%				43.5/100,000 youth 1-19, 2003-05	30	
ECONOMIC CLUSTER								
	65 Economic Index, 1994-96	-30.8%				85 Economic Index, 2003-05	17	

■ state change ■ county change ### = zero base - cannot calculate change County Rank (1 = best) (77 = worst)
 Changes of more than 100%—positive or negative—are graphed with broken bar *Indicates a tie with at least one other county.

CHILDHOOD STRESS INDEX

Category / Indicator	Number	Rate	Rank
BIRTH / GENETIC / BIOLOGICAL			
Very Low Birthweight (2003-05)	8 avg annual	1.0%	23
Autism Reported on IEPs (ages 3-21, FFY 2005-07)	29 avg annual	1.4/1,000	35
ENVIRONMENTAL FACTORS			
Poverty (ages 0-17, 2004)	2,211	18.7%	24
Unemployment (2003-05)	n/a	3.4%	12
EXPOSURE TO TRAUMA			
FEMA Disaster Declarations (Nov 2000-Aug 2007)	7	1.7/1,000 children	66
Adverse Childhood Experiences (ACE Index, 2006/07 Kids Count)	27.6	n/a	22
ACCESS TO TREATMENT			
Untreated by DMHSAS, OJA or Medicaid (ages 9-17, FY 2005-06)			
Untreated Mentally Ill & Substance-Abusers	724 avg annual	63.1%	48*
Untreated Serious Emotional Disturbance	312 avg annual	43.7%	
Suicide (ages 5-24, 2003-05)	1 avg annual	2.5/100,000	27



Childhood Stress Rank

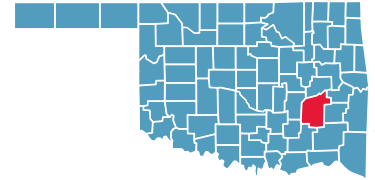
tie for 33

*Indicates a tie with at least one other county.

0.0%* or 0* indicates that, on average, services were provided to numbers of young clients which appear to serve all of the estimated need (prevalence) in the county

PITTSBURG COUNTY

County Seat: McAlester



Number of Children (2005): 9,488

Number of Poor Children (2004): 2,138

Children are 21.3% of the county population

Child Poverty Rate: 23.1%

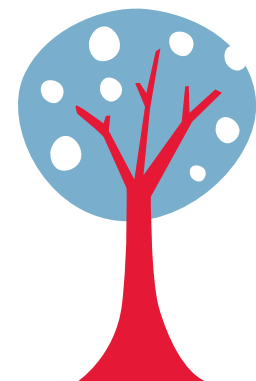
Economic Cluster: #5, Poorest

Indicator	Base Data	-	Worsened	Improved	+	Recent Data	Rank
BIRTHWEIGHT							
Low Birthweight (<5.5lbs)	6.1% of live births, 1994-96	-15.0%				7.0% of live births, 2003-05	25
Very Low Birthweight (<3 lbs, 5oz)	0.9% of live births, 1994-96	-24.6%				1.1% of live births, 2003-05	40
BIRTHS TO TEENS							
Births to Young Teens (ages 15-17)	34.8/1,000 girls 15-17, 1994-96				10.9%	31.0/1,000 girls 15-17, 2003-05	50
Births to Older Teens (ages 18-19)	141.8/1,000 girls 18-19, 1994-96				19.5%	114.2/1,000 girls 18-19, 2003-05	49
Births to Teens (ages 15-19)	69.7/1,000 girls 15-19, 1994-96				10.9%	62.2/1,000 girls 15-19, 2003-05	46
CHILD ABUSE & NEGLECT	12.2 confirmed/1,000 children, FY 1995-97	-145.0%				29.8 confirmed/1,000 children, FY 2004-06	73
HIGH SCHOOL DROPOUTS	4.3% youth <age 19, SY 2001/02-2003/04				19.7%	3.4% youth <age 19, SY 2003/04-2005/06	57
VIOLENT CRIME ARRESTS	157.3/100,000 youths 10-17, 1994-96				59.3%	64.0/100,000 youths 10-17, 2003-05	17
MORTALITY							
Infant Mortality (<age 1)	9.5/1,000 live births, 1994-96				16.4%	7.9/1,000 live births, 2003-05	45
Child Death (ages 1-14)	50.2/100,000 children 1-14, 1994-96				26.9%	36.7/100,000 children 1-14, 2003-05	53
Teen Death (ages 15-19)	143.8/100,000 teens 15-19, 1994-96				52.7%	68.1/100,000 teens 15-19, 2003-05	25
Child & Teen Death (ages 1-19)	75.9/100,000 youth 1-19, 1994-96				39.7%	45.7/100,000 youth 1-19, 2003-05	34
ECONOMIC CLUSTER	225 Economic Index, 1994-96				25.3%	168 Economic Index, 2003-05	46

■ state change ■ county change ### = zero base - cannot calculate change County Rank (1 = best) (77 = worst)
 Changes of more than 100%—positive or negative—are graphed with broken bar *Indicates a tie with at least one other county.

CHILDHOOD STRESS INDEX

Category / Indicator	Number	Rate	Rank
BIRTH / GENETIC / BIOLOGICAL			
Very Low Birthweight (2003-05)	6 avg annual	1.1%	40
Autism Reported on IEPs (ages 3-21, FFY 2005-07)	19 avg annual	1.8/1,000	51
ENVIRONMENTAL FACTORS			
Poverty (ages 0-17, 2004)	2,138	23.1%	47
Unemployment (2003-05)	n/a	5.4%	49
EXPOSURE TO TRAUMA			
FEMA Disaster Declarations (Nov 2000-Aug 2007)	7	1.4/1,000 children	59
Adverse Childhood Experiences (ACE Index, 2006/07 Kids Count)	57.1	n/a	74
ACCESS TO TREATMENT			
Untreated by DMHSAS, OJA or Medicaid (ages 9-17, FY 2005-06)			
Untreated Mentally Ill & Substance-Abusers	393 avg annual	36.8%	11
Untreated Serious Emotional Disturbance	24 avg annual	3.7%	
Suicide (ages 5-24, 2003-05)	1 avg annual	12.0/100,000	66



Childhood Stress Rank

58

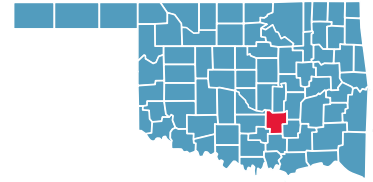
*Indicates a tie with at least one other county.

0.0%* or 0* indicates that, on average, services were provided to numbers of young clients which appear to serve all of the estimated need (prevalence) in the county



PONTOTOC COUNTY

County Seat: **Ada**



Number of Children (2005): **8,193**

Number of Poor Children (2004): **1,903**

Children are **23.2%** of the county population

Child Poverty Rate: **23.4%**

Economic Cluster: **#3, Middle**

Indicator	Base Data	-	Worsened	Improved	+	Recent Data	Rank
BIRTHWEIGHT							
Low Birthweight (<5.5lbs)	6.7% of live births, 1994-96	-9.1%				7.3% of live births, 2003-05	33
Very Low Birthweight (<3 lbs, 5oz)	0.7% of live births, 1994-96	-62.5%				1.1% of live births, 2003-05	34
BIRTHS TO TEENS							
Births to Young Teens (ages 15-17)	30.9/1,000 girls 15-17, 1994-96					20.6/1,000 girls 15-17, 2003-05	25
Births to Older Teens (ages 18-19)	82.7/1,000 girls 18-19, 1994-96	-18.2%				97.7/1,000 girls 18-19, 2003-05	30
Births to Teens (ages 15-19)	54.7/1,000 girls 15-19, 1994-96					51.2/1,000 girls 15-19, 2003-05	27
CHILD ABUSE & NEGLECT							
	21.3 confirmed/1,000 children, FY 1995-97					17.5 confirmed/1,000 children, FY 2004-06	40
HIGH SCHOOL DROPOUTS							
	2.8% youth <age 19, SY 2001/02-2003/04	-25.5%				3.5% youth <age 19, SY 2003/04-2005/06	59
VIOLENT CRIME ARRESTS							
	119.8/100,000 youths 10-17, 1994-96	-32.7%				159.1/100,000 youths 10-17, 2003-05	53
MORTALITY							
Infant Mortality (<age 1)	11.6/1,000 live births, 1994-96					9.3/1,000 live births, 2003-05	58
Child Death (ages 1-14)	14.8/100,000 children 1-14, 1994-96	-113.0%				31.5/100,000 children 1-14, 2003-05	44
Teen Death (ages 15-19)	69.5/100,000 teens 15-19, 1994-96	-49.9%				104.2/100,000 teens 15-19, 2003-05	49
Child & Teen Death (ages 1-19)	31.1/100,000 youth 1-19, 1994-96	-68.3%				52.4/100,000 youth 1-19, 2003-05	42
ECONOMIC CLUSTER							
	185 Economic Index, 1994-96					161 Economic Index, 2003-05	43

■ state change

■ county change

= zero base - cannot calculate change

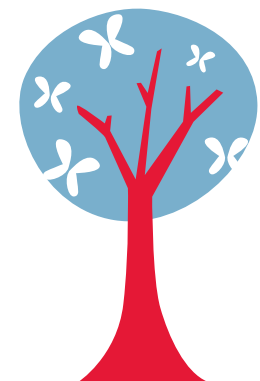
County Rank (1 = best) (77 = worst)

Changes of more than 100%—positive or negative—are graphed with broken bar

*Indicates a tie with at least one other county.

CHILDHOOD STRESS INDEX

Category / Indicator	Number	Rate	Rank
BIRTH / GENETIC / BIOLOGICAL			
Very Low Birthweight (2003-05)	5 avg annual	1.1%	34
Autism Reported on IEPs (ages 3-21, FFY 2005-07)	12 avg annual	1.3/1,000	28
ENVIRONMENTAL FACTORS			
Poverty (ages 0-17, 2004)	1,903	23.4%	49*
Unemployment (2003-05)	n/a	4.9%	42
EXPOSURE TO TRAUMA			
FEMA Disaster Declarations (Nov 2000-Aug 2007)	9	0.9/1,000 children	47
Adverse Childhood Experiences (ACE Index, 2006/07 Kids Count)	41.3	n/a	55
ACCESS TO TREATMENT			
Untreated by DMHSAS, OJA or Medicaid (ages 9-17, FY 2005-06)			
Untreated Mentally Ill & Substance-Abusers	340 avg annual	39.7%	12
Untreated Serious Emotional Disturbance	58 avg annual	10.8%	
Suicide (ages 5-24, 2003-05)	1 avg annual	6.5/100,000	44



Childhood Stress Rank

45

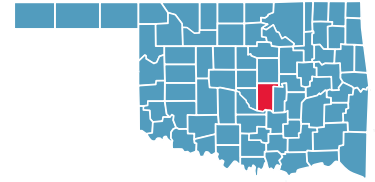
*Indicates a tie with at least one other county.

0.0%* or 0* indicates that, on average, services were provided to numbers of young clients which appear to serve all of the estimated need (prevalence) in the county



POTTAWATOMIE COUNTY

County Seat: **Shawnee**



Number of Children (2005): **16,059**

Number of Poor Children (2004): **3,713**

Children are **23.5%** of the county population

Child Poverty Rate: **23.4%**

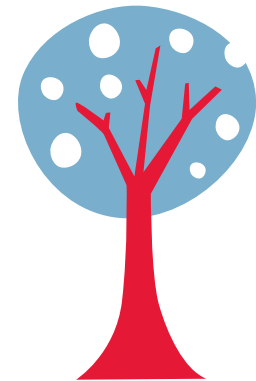
Economic Cluster: **#5, Poorest**

Indicator	Base Data	-	Worsened	Improved	+	Recent Data	Rank	
BIRTHWEIGHT								
Low Birthweight (<5.5lbs)	6.9% of live births, 1994-96	-13.4%				7.8% of live births, 2003-05	45	
Very Low Birthweight (<3 lbs, 5oz)	0.8% of live births, 1994-96	-61.4%				1.3% of live births, 2003-05	51	
BIRTHS TO TEENS								
Births to Young Teens (ages 15-17)	37.6/1,000 girls 15-17, 1994-96					18.1%	30.8/1,000 girls 15-17, 2003-05	49
Births to Older Teens (ages 18-19)	82.0/1,000 girls 18-19, 1994-96	-10.6%					90.6/1,000 girls 18-19, 2003-05	26
Births to Teens (ages 15-19)	57.2/1,000 girls 15-19, 1994-96					1.5%	56.3/1,000 girls 15-19, 2003-05	39
CHILD ABUSE & NEGLECT								
	22.4 confirmed/1,000 children, FY 1995-97					40.1%	13.4 confirmed/1,000 children, FY 2004-06	25
HIGH SCHOOL DROPOUTS								
	4.2% youth <age 19, SY 2001/02-2003/04					16.3%	3.5% youth <age 19, SY 2003/04-2005/06	60
VIOLENT CRIME ARRESTS								
	389.4/100,000 youths 10-17, 1994-96					43.1%	221.6/100,000 youths 10-17, 2003-05	68
MORTALITY								
Infant Mortality (<age 1)	9.1/1,000 live births, 1994-96					26.2%	6.7/1,000 live births, 2003-05	31
Child Death (ages 1-14)	42.1/100,000 children 1-14, 1994-96					18.2%	34.4/100,000 children 1-14, 2003-05	47
Teen Death (ages 15-19)	74.5/100,000 teens 15-19, 1994-96					22.8%	57.5/100,000 teens 15-19, 2003-05	17
Child & Teen Death (ages 1-19)	51.7/100,000 youth 1-19, 1994-96					20.4%	41.2/100,000 youth 1-19, 2003-05	27
ECONOMIC CLUSTER								
	156 Economic Index, 1994-96	-28.2%					200 Economic Index, 2003-05	52*

■ state change ■ county change ### = zero base - cannot calculate change County Rank (1 = best) (77 = worst)
 Changes of more than 100%—positive or negative—are graphed with broken bar *Indicates a tie with at least one other county.

CHILDHOOD STRESS INDEX

Category / Indicator	Number	Rate	Rank
BIRTH / GENETIC / BIOLOGICAL			
Very Low Birthweight (2003-05)	11 avg annual	1.3%	51
Autism Reported on IEPs (ages 3-21, FFY 2005-07)	26 avg annual	1.4/1,000	38
ENVIRONMENTAL FACTORS			
Poverty (ages 0-17, 2004)	3,713	23.4%	49*
Unemployment (2003-05)	n/a	5.5%	51
EXPOSURE TO TRAUMA			
FEMA Disaster Declarations (Nov 2000-Aug 2007)	10	1.6/1,000 children	65
Adverse Childhood Experiences (ACE Index, 2006/07 Kids Count)	41.0	n/a	53*
ACCESS TO TREATMENT			
Untreated by DMHSAS, OJA or Medicaid (ages 9-17, FY 2005-06)			
Untreated Mentally Ill & Substance-Abusers	1,178 avg annual	68.6%	65
Untreated Serious Emotional Disturbance	584 avg annual	54.7%	
Suicide (ages 5-24, 2003-05)	1 avg annual	5.1/100,000	35



Childhood Stress Rank

59

*Indicates a tie with at least one other county.

0.0%* or 0* indicates that, on average, services were provided to numbers of young clients which appear to serve all of the estimated need (prevalence) in the county

